

Tree-lobed apple (EN)

Melo trilobo (IT)

Manzano trilobulado (SP)

Pommier trilobé (FR)

تفاح الجبل (AR-LB)



Malus trilobata (Labill. ex Poir.) C.K. Schneid.

Growth conditions in the wild



Endemic to Lebanon.



It is found both on limestone and siliceous substrata. It occurs frequently in woods and clearing of forest and bushes.



It is located in a wide altitudinal range, from ca. 900 to 1700 m.a.s.l.

Seed germination



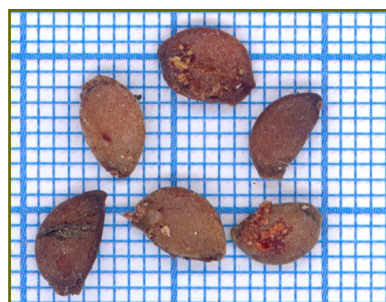
Cold/moist stratification for 90 days at 4°C on sand with no direct light. All seeds germinated during stratification.



First seedlings may be observed in 2 months. Total test length: 4 months.

Average germination: 89%.

Seed information and collection



•Averaged weight for 100 seeds is 2.4 g (100 g \approx 4,082 seeds).

•Fruits must be collected when they have a yellow-green colour and well ripped. Harvesting is done manually from the ground or using stools or ladders, picking the mature fruits directly from the branches.

•Non-protected species, except inside protected areas where collection is regulated.

Seed management

•Cut the fruit in the middle and recover the seeds.

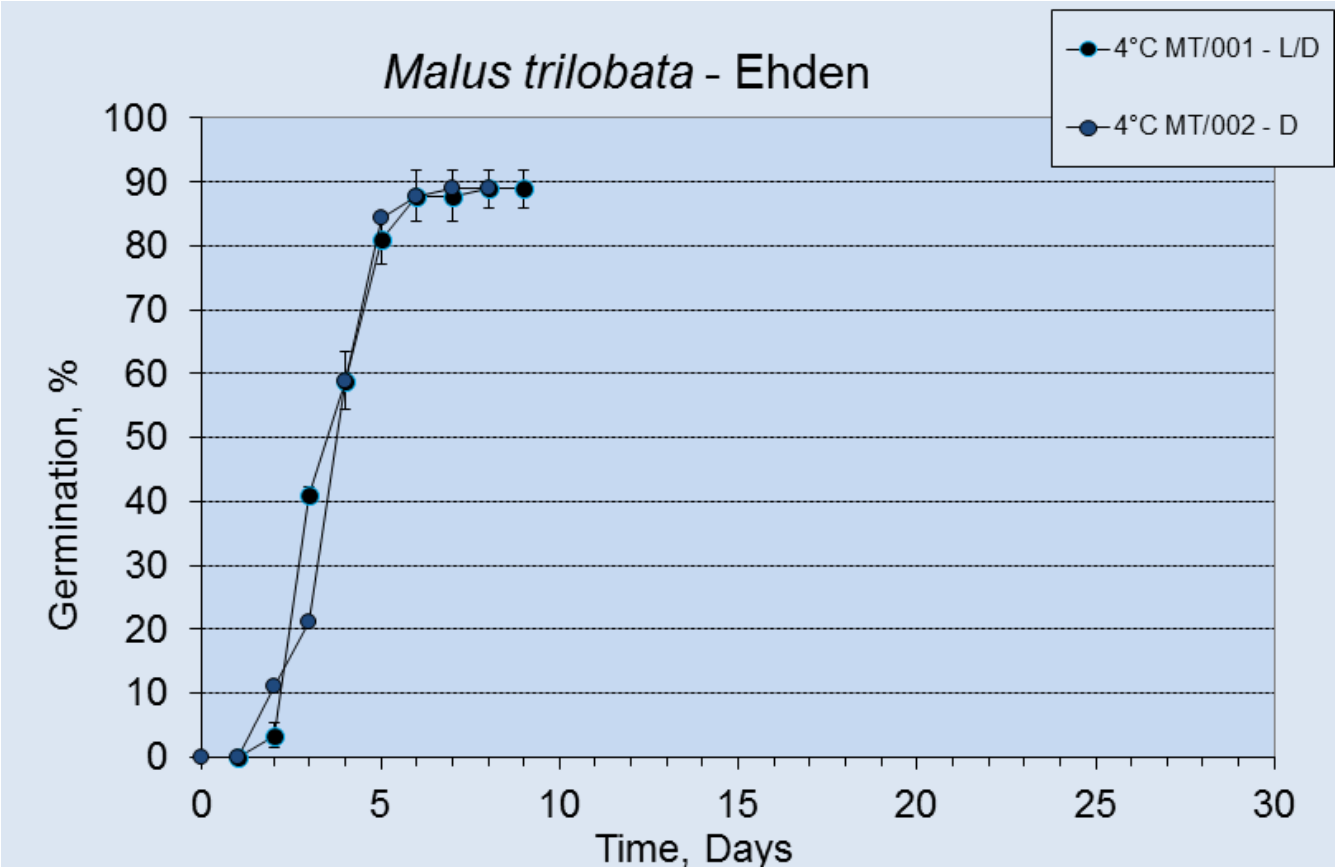
•Seeds are orthodox, so can be dried at 15°C and 15% RH and stored at 4°C for several years, or -25°C as base collection.

J	F	M	A	M	J	J	A	S	O	N	D	J	F	M	A	M	J	J	A	S	O	N	D
				✿	✿			🍏	🍏					🌱	🌱		🌱	🌱					

The fruits are edible and are characterized by their sweetness.

Tree-lobed apple (EN)
Melo trilobo (IT)
Manzano trilobulado (SP)
Pommier trilobé (FR)
تفاح الجبل (AR-LB)

Germination cinetic



Tree-lobed apple (EN)

Melo trilobo (IT)

Manzano trilobulado (SP)

Pommier trilobé (FR)

تفاح الجبل (AR-LB)

Distribution of *Malus trilobata*

